



# **Christian Academy of Louisville- Louisville KY Elementary**

*Shaheen's Uniform Shopping guide*

## **Boys**

### **Cotton Polo Shirt with Logo (short and long sleeve)**

White, Navy, Red

### **Dri-Fit Polo Shirt with Logo**

Navy, Red

### **Oxford Dress Shirt (short and long sleeve)**

White, Light Blue

### **Pants and Shorts:**

Navy, Khaki

### **Crewneck Sweatshirt with Logo**

Red, Navy

### **V-Neck Sweater with Logo:**

Navy

### **V-Neck Sweater Vest with Logo**

Navy

### **Ties (required for chapel day): Red or Navy**

Shaheen's offers a wide variety of uniform accessories including socks, tights, belts, matching hair accessories and more! Please refer to your schools guidelines.



**Christian Academy of Louisville- Louisville KY**  
**Elementary**  
*Shaheen's Uniform Shopping guide*

## **Girls**

**Cotton Polo Shirt with Logo (short and long sleeve)**

White, Navy, Red

**Dri-Fit Polo Shirt with Logo**

Navy, Red

**Round Collar Blouse: White (short and long sleeve)**

**Jumpers (Kindergarten-4)**

Navy with Logo, Plaid 64

**Skirts**

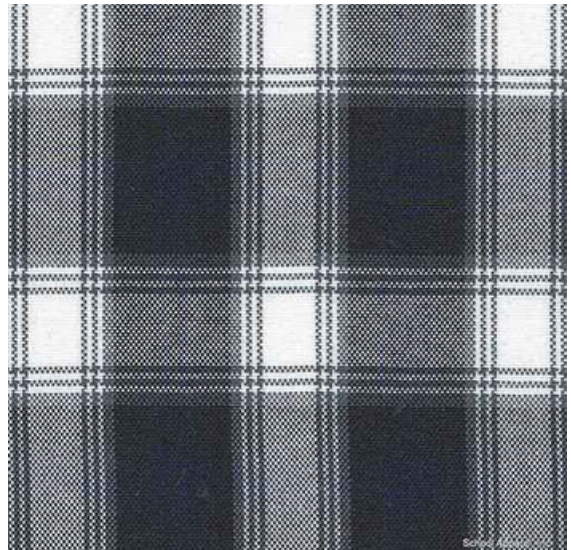
Khaki, Navy, Plaid 64

**Skorts**

Khaki, Navy

**Pants and Shorts:**

Navy, Khaki



## **Crewneck Sweatshirt with Logo**

Red, Navy

## **Cardigan Sweater with Logo**

Navy

## **V-Neck Sweater with Logo**

Navy

## **V-Neck Sweater Vest with Logo**

Navy

Shaheen's offers a wide variety of uniform accessories including socks, tights, belts, matching hair accessories and more! Please refer to your schools guidelines.