



# **Christian Academy of Indiana- New Albany, IN Middle School**

*Shaheen's Uniform Shopping guide*

## **Boys**

**Cotton Polo Shirt with Logo (short and long sleeve)**

White, Navy, Gold (Required for “Field Trip Day”)

**Dri-Fit Polo Shirt with Logo**

Navy, Gold

**Oxford Dress Shirt (short and long sleeve)**

White, Light Blue

**Pants and Shorts:**

Navy, Khaki

**Crewneck Sweatshirt with Logo**

Navy, Royal Blue

**V-Neck Sweater with Logo: Navy**

**V-Neck Sweater Vest with Logo: Navy**

**V-Neck Cardigan with Logo: Navy**

**Ties: Any Color (Required for Chapel)**

Shaheen's offers a wide variety of uniform accessories including socks, tights, belts, matching hair accessories and more! Please refer to your schools guidelines.



# **Christian Academy of Indiana- New Albany, IN Middle School**

*Shaheen's Uniform Shopping guide*

## **Girls**

### **Cotton Polo Shirt with Logo (short and long sleeve)**

White, Navy, Gold (Required for “Field Trip Day”)

### **Dri-Fit Polo Shirt with Logo**

Navy, Gold

### **Oxford Dress Shirt**

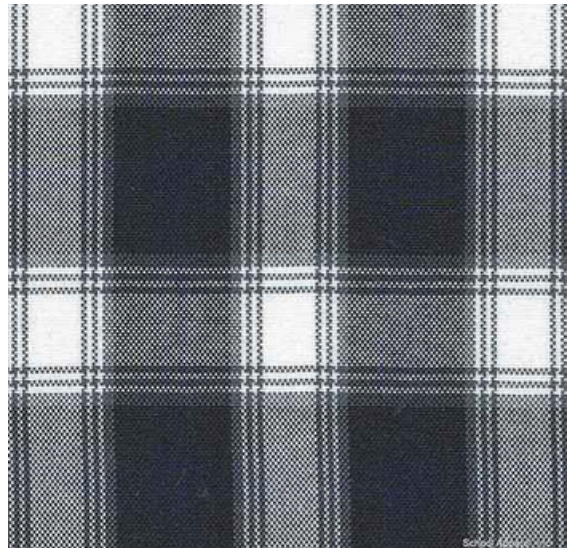
White, Light Blue

### **Skirts**

Khaki, Navy, Plaid 64

### **Pants and Shorts:**

Navy, Khaki



### **Crewneck Sweatshirt with Logo**

Royal Blue, Navy

### **Cardigan Sweater with Logo: Navy**

### **V-Neck Sweater with Logo: Navy**

### **V-Neck Sweater Vest with Logo: Navy**

Shaheen's offers a wide variety of uniform accessories including socks, tights, belts, matching hair accessories and more! Please refer to your schools guidelines.