



Christian Academy of Indiana- New Albany, IN High School

Shaheen's Uniform Shopping guide

Boys

Cotton Polo Shirt with Logo (short and long sleeve)

White, Navy, Gold (Required for “Field Trip Day”)

Dri-Fit Polo Shirt with Logo

Navy, Gold

Oxford Dress Shirt (short and long sleeve)

White, Light Blue

Pants and Shorts:

Navy, Khaki

Crewneck Sweatshirt with Logo

Navy, Royal Blue

V-Neck Sweater with Logo: Navy

V-Neck Sweater Vest with Logo: Navy

V-Neck Cardigan with Logo: Navy

Ties: Any Color (Required for Chapel)

Shaheen's offers a wide variety of uniform accessories including socks, tights, belts, matching hair accessories and more! Please refer to your schools guidelines.



Christian Academy of Indiana- New Albany, IN High School

Shaheen's Uniform Shopping guide

Girls

Cotton Polo Shirt with Logo (short and long sleeve)

White, Navy, Gold (Required for “Field Trip Day”)

Dri-Fit Polo Shirt with Logo

Navy, Gold

Oxford Dress Shirt:

White, Light Blue

Skirts

Khaki, Navy, Plaid 64

Pants and Shorts:

Navy, Khaki

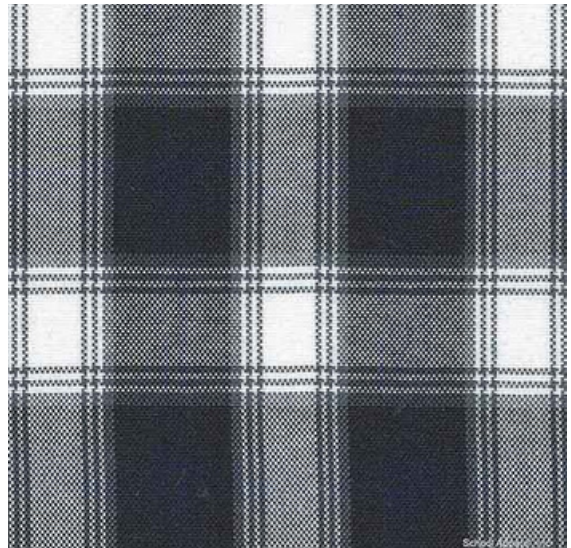
Crewneck Sweatshirt with Logo

Navy, Royal Blue

Cardigan Sweater with Logo: Navy

V-Neck Sweater with Logo: Navy

V-Neck Sweater Vest with Logo: Navy



Shaheen's offers a wide variety of uniform accessories including socks, tights, belts, matching hair accessories and more! Please refer to your schools guidelines.

Shaheen's offers a wide variety of uniform accessories including socks, tights, belts, matching hair accessories and more! Please refer to your schools guidelines.